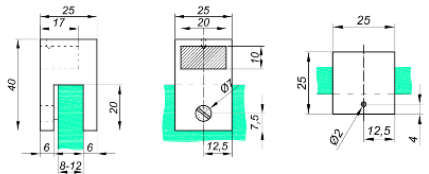
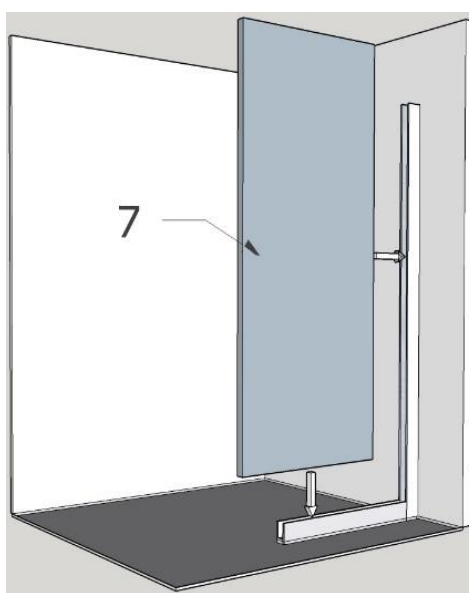
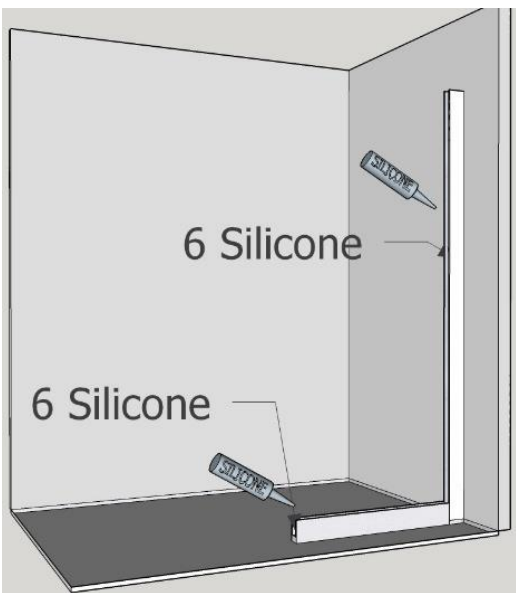
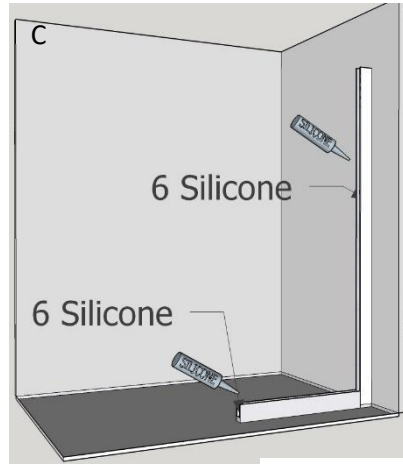
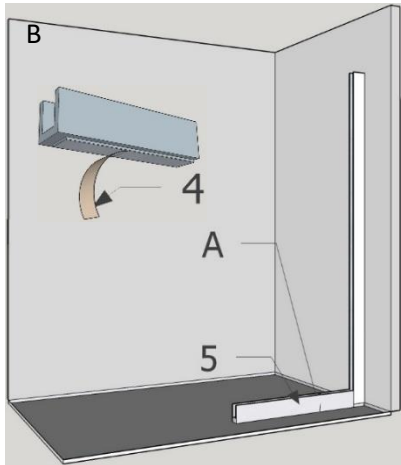
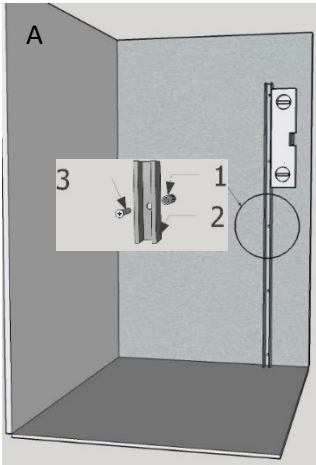
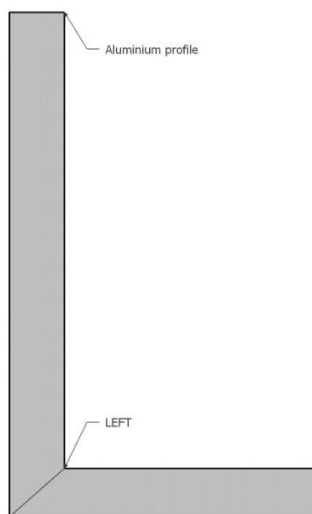
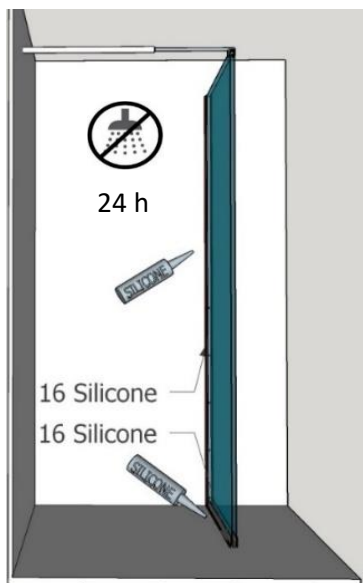
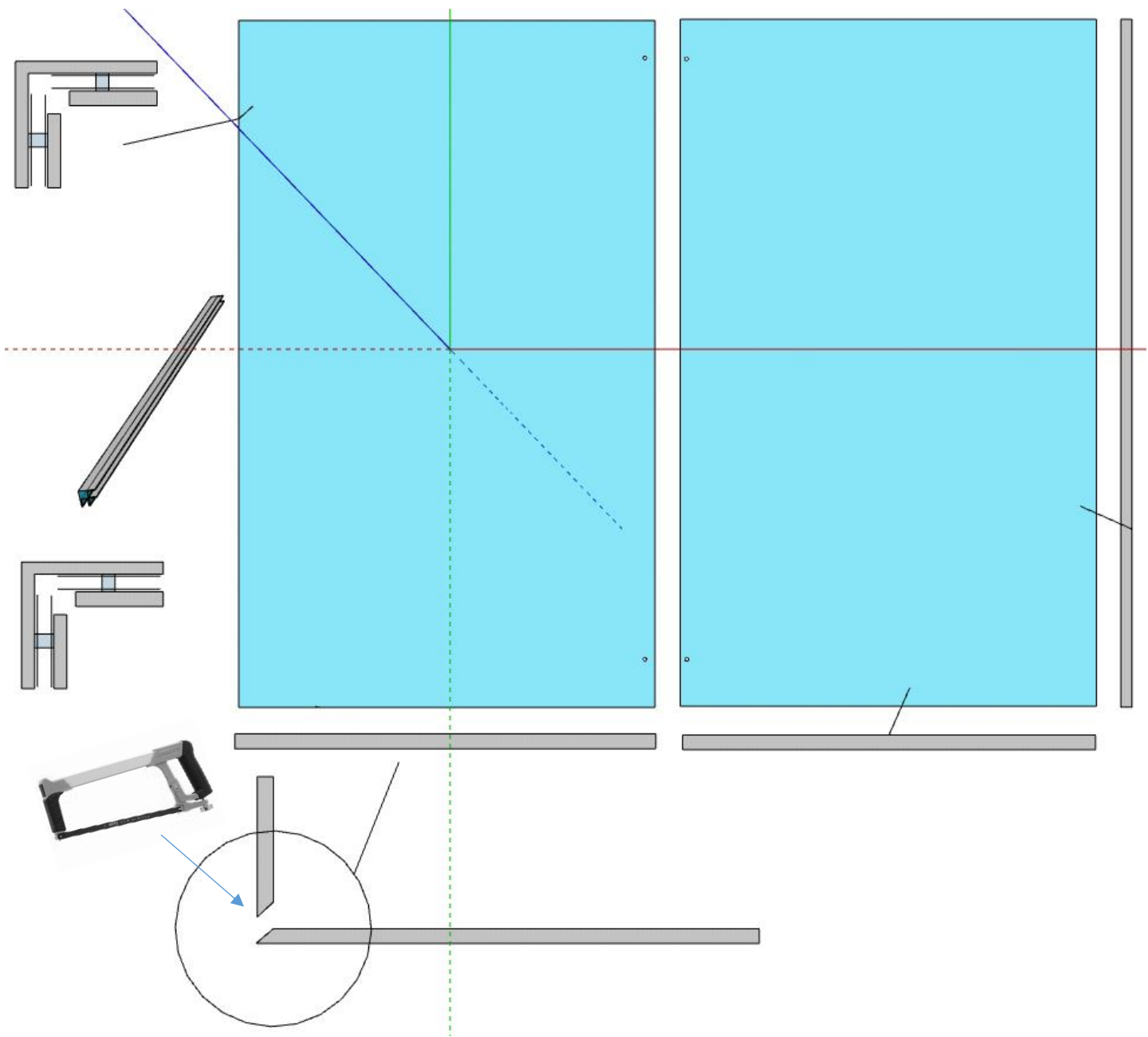


GB	Assembly instruction	
S	Monteringsanvisning	
N	Monteringsveiledning	
DK	Monteringsvejledning	
FI	Asennusohje	
RU	Инструкция по монтажу	
EE	Paigaldusjuhised	
LT	Montavimo instrukcijos	
	A	B
	90 x 90	865 878 - 883
	100 x 80	965 778 - 783
	110 x 90	1065 878 - 883
	120 x 80	1165 778 - 783
	120 x 90	1165 878 - 883
	140 x 100	1365 978 - 983
	160 x 100	1565 978 - 983





Grollo
SHOWER ENCLOSURES